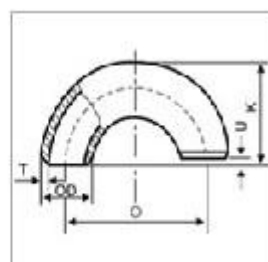
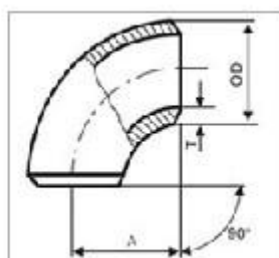
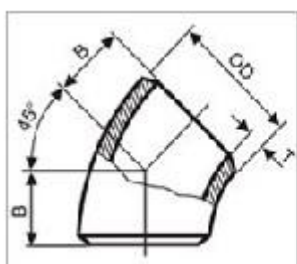


90°1.5D Butt Welding Fittings 90E(L)

Forming Type:	Mandrel-Forming for Stainless Steel (So it will not reduce the wall thickness);
Size:	Seamless Fittings 1/2"-20" (DN15-DN500), Welded Fittings 1/2"-48" (DN15-DN1100)
Standard:	ASME B16.9. ANSI B16.28. MSS SP-43 . DIN 2605 . JIS B2313 . GB/T12459 . GB/T13401. SH3408.
Thickness:	SCH5S-SCHXXS
Material:	304 .304L .316 .316L .310S.317L.321. 321H. 347H. S31803. 904L



Nominal Diameter		Outside Diameter	Center to End			Center to Center		Back to End	
			45°	90°Elbow		170°Elbow			
DN	INCH		B	A		O		K	
			L/R	L/R	S/R	L/R	S/R	L/R	S/R
15	1/2	21.3	16	38	-	76	-	48	-
20	3/4	26.9	19	38	-	76	-	51	-
25	1	33.7	22	38	25	76	51	56	41
32	1.1/4	42.4	25	48	32	95	64	70	50
40	1.1/2	48.3	29	57	38	114	76	80	62
50	2	60.3	35	76	51	150	102	106	81
65	2.1/2	76.1(73)	40	95	64	190	120	132	100

80	3	88.9	51	114	76	229	150	159	121
90	3.1/2	101.6	57	133	89	260	178	184	140
100	4	114.3	64	150	102	305	203	210	159
125	5	139.7	79	190	120	381	254	262	197
150	6	168.3	95	229	150	457	305	313	237
200	8	219.1	120	305	203	600	406	414	313
250	10	273	159	381	254	762	508	518	391
300	12	323.9	190	457	305	914	600	609	460
350	14	355.6	222	503	356	1060	711	711	503
400	16	406.4	254	600	406	1219	813	813	600
450	18	457.2	286	686	457	1360	914	914	686
500	20	508	318	762	508	1504	1016	1016	762
550	22	559	343	808	559	1606	1118	1118	808
600	24	600	381	914	600	1829	1219	1219	914

Provide By [ZhiTong pipe fittings](#)